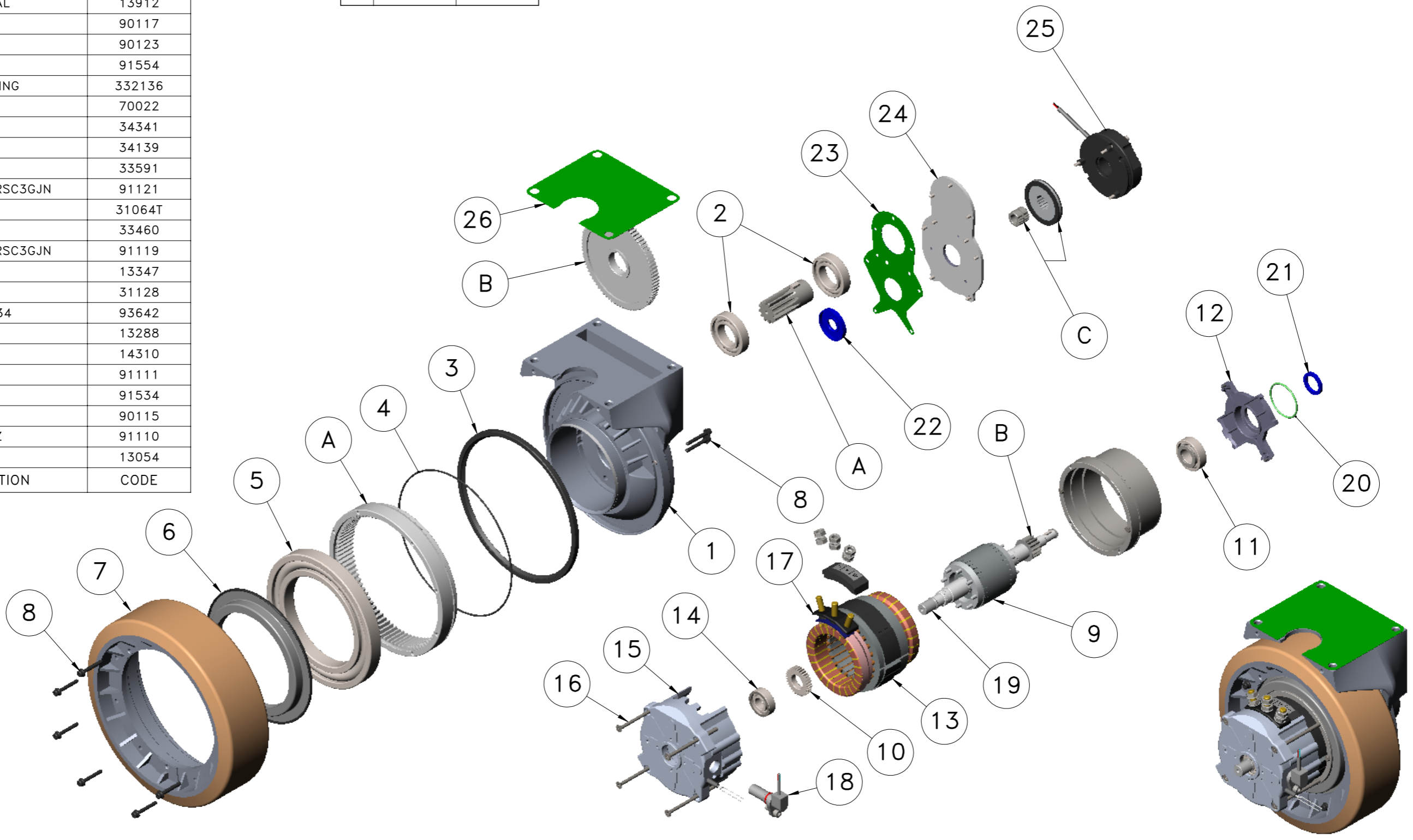



POS.	Q.TY	DESCRIPTION	CODE
26	1	GASKET	13902
25	1	BRAKE \varnothing 84CR	11143
24	1	BRAKE PLATE	13716
23	1	BRAKE PLATE SEAL	13912
22	1	SEALING	90117
21	1	SEALING	90123
20	1	OR 3168	91554
19	1	ENCODER CENTERING	332136
18	1	SPEED SENSOR	70022
17	1	BASE	34341
16	4	TIE ROD	34139
15	1	FLANGE	33591
14	1	BEARING 6202 2RSC3GJN	91121
13	1	STATOR FIELD	31064T
12	1	FLANGE	33460
11	1	BEARING 6004 2RSC3GJN	91119
10	1	FONIC WHEEL	13347
9	1	ROTOR	31128
8	12	SCREW TCEI M5x34	93642
7	1	WHEEL \varnothing 250x76	13288
6	1	SEALING	14310
5	1	BEARING 16024	91111
4	1	O-RING OR3725	91534
3	1	SEALING RING	90115
2	2	BEARING 6006 2Z	91110
1	1	AL CASTING	13054

C	FERODO	12914
B	GEARS	12903
A	GEARS	12946



DIS. 10190-E	REV 00	DISEGNATO AN2 Studio	VISTO	AGGIORNAMENTO STRUTTURA	APPROVAZIONE U.T.E.	Rev	Visto	 Via Danimarca, 14/14 20093 Cologno Monzese - Milano - ITALY
	MODIFICHE		DATA 05/07/2021	SCALA 1:5	0 EMISSIONE		22.11.21 PD	
					SPAREPARTS A1Cac MOTOR CODE 30888T 48 Vdc / 700 W WHEEL \varnothing 250x76 RUBBER 70 \pm 72Sh			CODICE 10190-E
					Project Nr.		2100059/01	