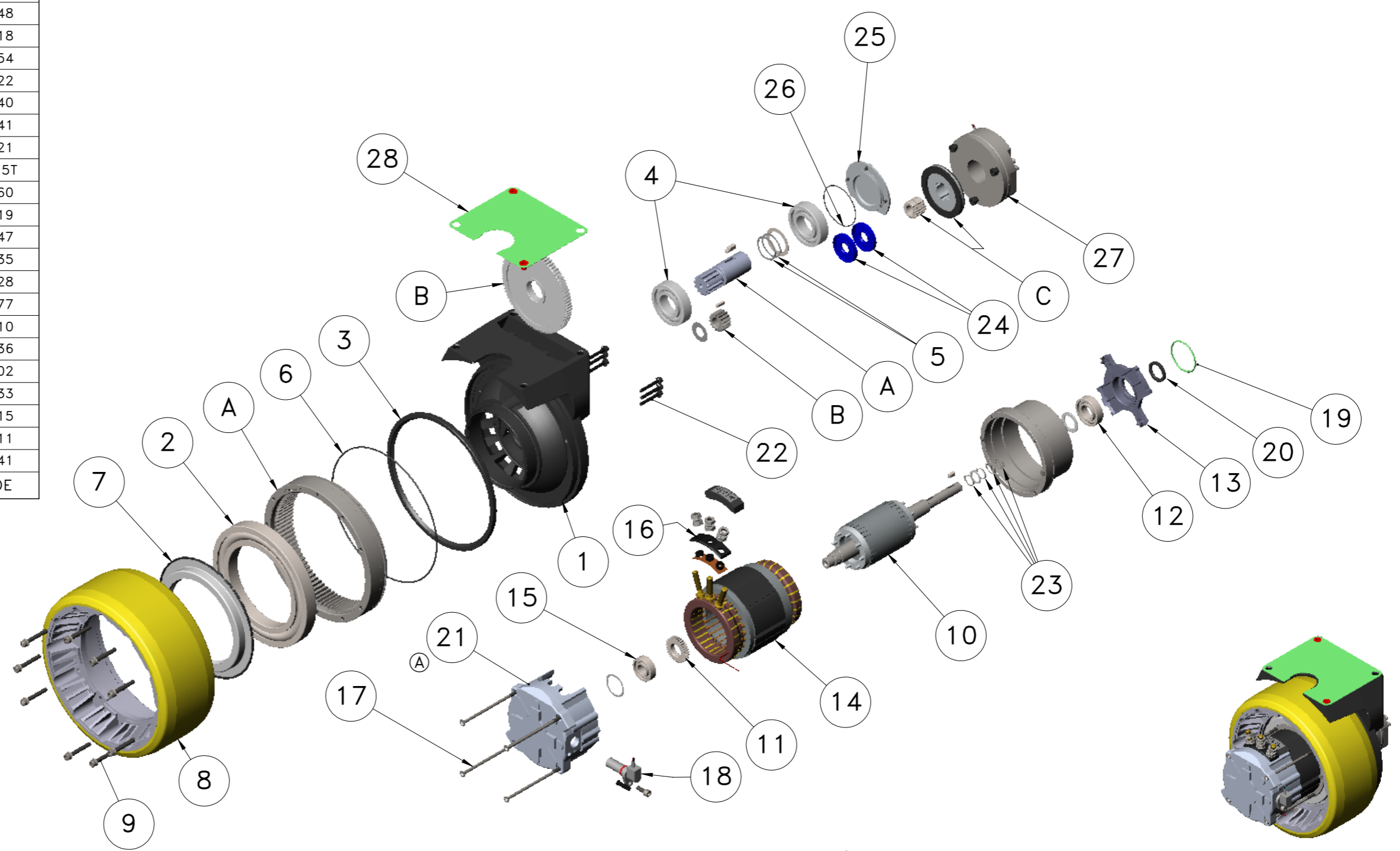



POS.	Q.TY	DESCRIPTION	CODE
28	1	GASKET	13902
27	1	BRAKE ø104CR	11128
26	1	OR 2225	91556
25	1	COVER	14104
24	2	SEALING	90117
23	4	SEGER AS14 DIN 471	93209
22	6	SCREW TCEI M5x34	93642
21	1	FLANGE	33548
20	1	SEALING	90118
19	1	OR 3168	91554
18	1	SPEED SENSOR	70022
17	4	TIE ROD M5	34140
16	1	BASE	34341
15	1	BEARING 6202 2RSC3GJN	91121
14	1	STATOR FIELD	31015T
13	1	FLANGE	33460
12	1	BEARING 6004 2RSC3GJN	91119
11	1	FONIC WHEEL	13347
10	1	ROTOR	31135
9	9		93628
8	1	WHEEL ø245x101	13277
7	1	SEALING	14310
6	1	OR 3775	91536
5	2	COMPENSATION RING	92702
4	2	BEARING 6206 2Z	91133
3	1	SEALING RING	90115
2	1	BEARING 16024	91111
1	1	IRON CASTING	13041

C	FERODO	12913
B	GEARS	12903
A	GEARS	12944



DIS. 10363NT-E	REV	DISEGNATO	VISTO	AGGIORNAMENTO STRUTTURA	APPROVAZIONE	Rev	Visto	 Via Danimarca, 14/14 20093 Cologno Monzese - Milano - ITALY
	01	AN Studio			U.T.E.			
		DATA	SCALA					SPAREPARTS G1C AC MOTOR CODE 30746NT 48 Vcc / 1200 W WHEEL ø245x101 POLYURETHANE
		01/03/2016	1:6					
MODIFICHE								Project Nr.
0	EMISSIONE			01.03.16	AN			
A	SOSTITUITO SUPPORTO Cod.33548 (ERA Cod.35558)			08.03.18	PD			

CODICE 10363NT-E

Formato: A3 Disegno eseguito con SW non sono ammesse variazioni o modifiche manuali