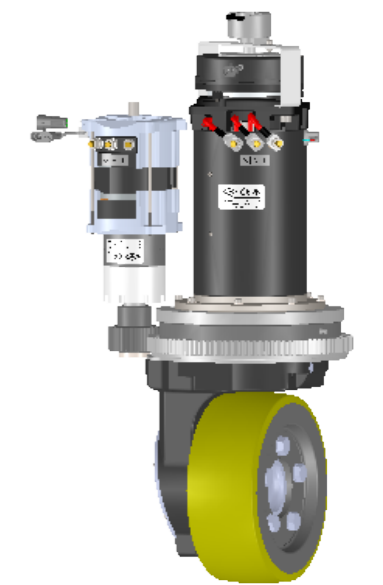
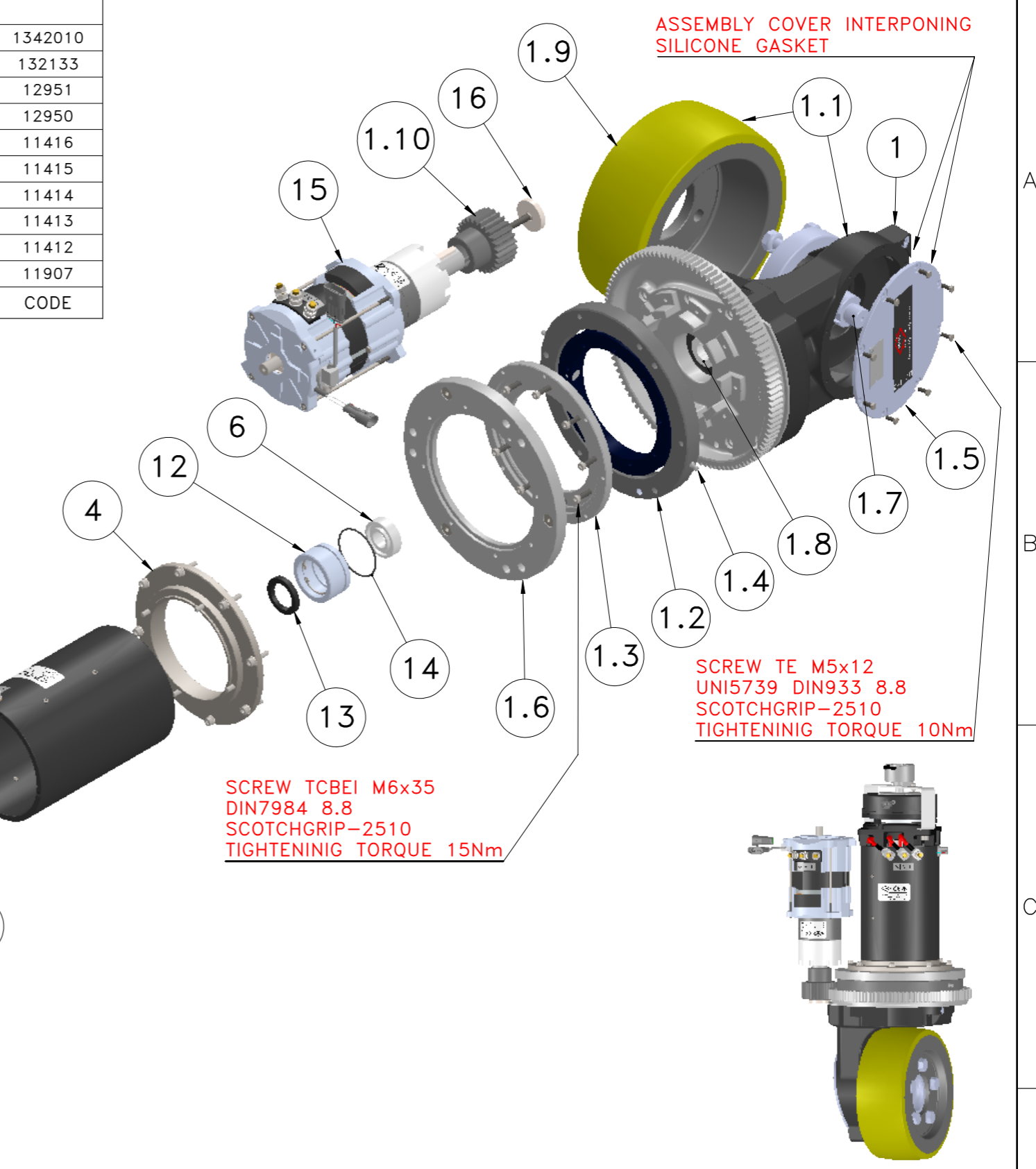
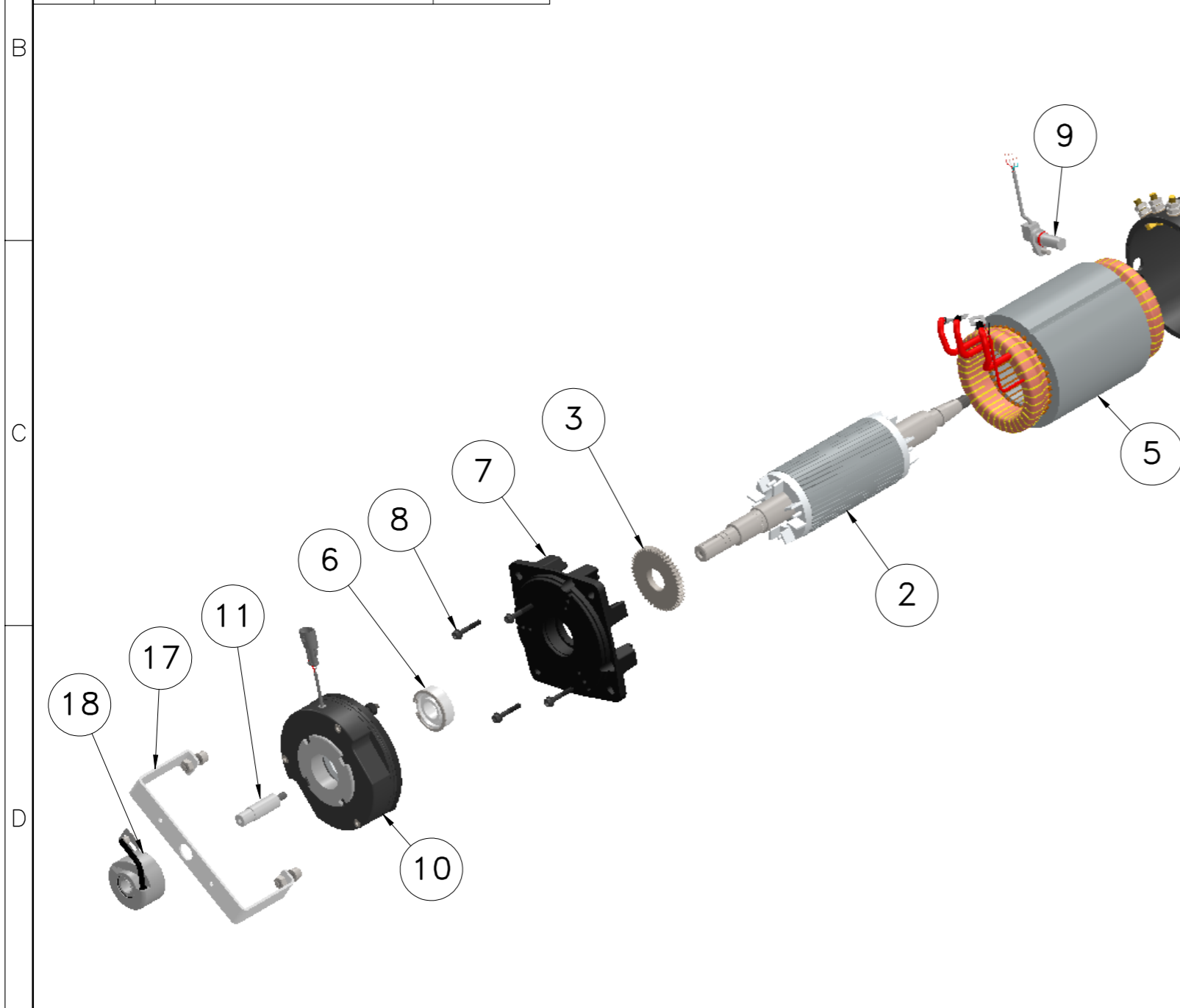


18	1	SPEED SENSOR	70033
17	1	BRACKET	34767
16	1	WASHER	15117
15	1	GEAR MOTOR	30048TC-E
14	1	OR 3225	91563
13	1	SEALING	90121
12	1	COMPASS	14609
11	1	ENCODER CENTERING	332153
10	1	BRAKE ϕ 145CR	11185R
9	1	SPEED SENSOR	70022
8	4	SCREW TCEI M6x34	93676
7	1	FLANGE	31975
6	2	BEARING 6204 2RS C3	91107
5	1	STATOR FIELD	31067T
4	1	FLANGE	33552
3	1	FONIC WHEEL	13348
2	1	ROTOR	31111
1	1	MV188 COMPLETE	11706
POS.	Q.TY	DESCRIPTION	CODE

MV188 COMPLETE (11706)			
1.10	1	PINION z=26 m=2.5	1342010
1.9	1	WHEEL ϕ 254x100	132133
1.8	1	GEARS	12951
1.7	1	COUPLE GLEASON	12950
1.6	1	FLANGE	11416
1.5	1	GEAR COVER	11415
1.4	1	GREASE NIPPLE DIN7663/A ES7 M6x1	11414
1.3	1	FLANGE ROTARY ENGINE	11413
1.2	1	FIFTH WHEEL BEARING	11412
1.1	1	MV188+WHEEL	11907
POS.	Q.TY	DESCRIPTION	CODE



DIS.	REV	DISEGNATO	VISTO	AGGIORNAMENTO STRUTTURALE	APPROVAZIONE	Rev	Visto	
10929-E	00	AN2 Studio			U.T.E.			
		DATA	SCALA		Via Danimarca, 14/14 20093 Cologno Monzese - Milano - ITALY			CODICE 10929-E
		30/06/2022	1:6		SPAREPARTS MV188 MOTOR CODE 30998T			
		MODIFICHE			48 Vdc / 2500 W WHEEL ϕ 254x100 POLYURETHANE WITH STEERING			
0		EMISSIONE	12.07.22	PD	Project Nr. 2200016/000			