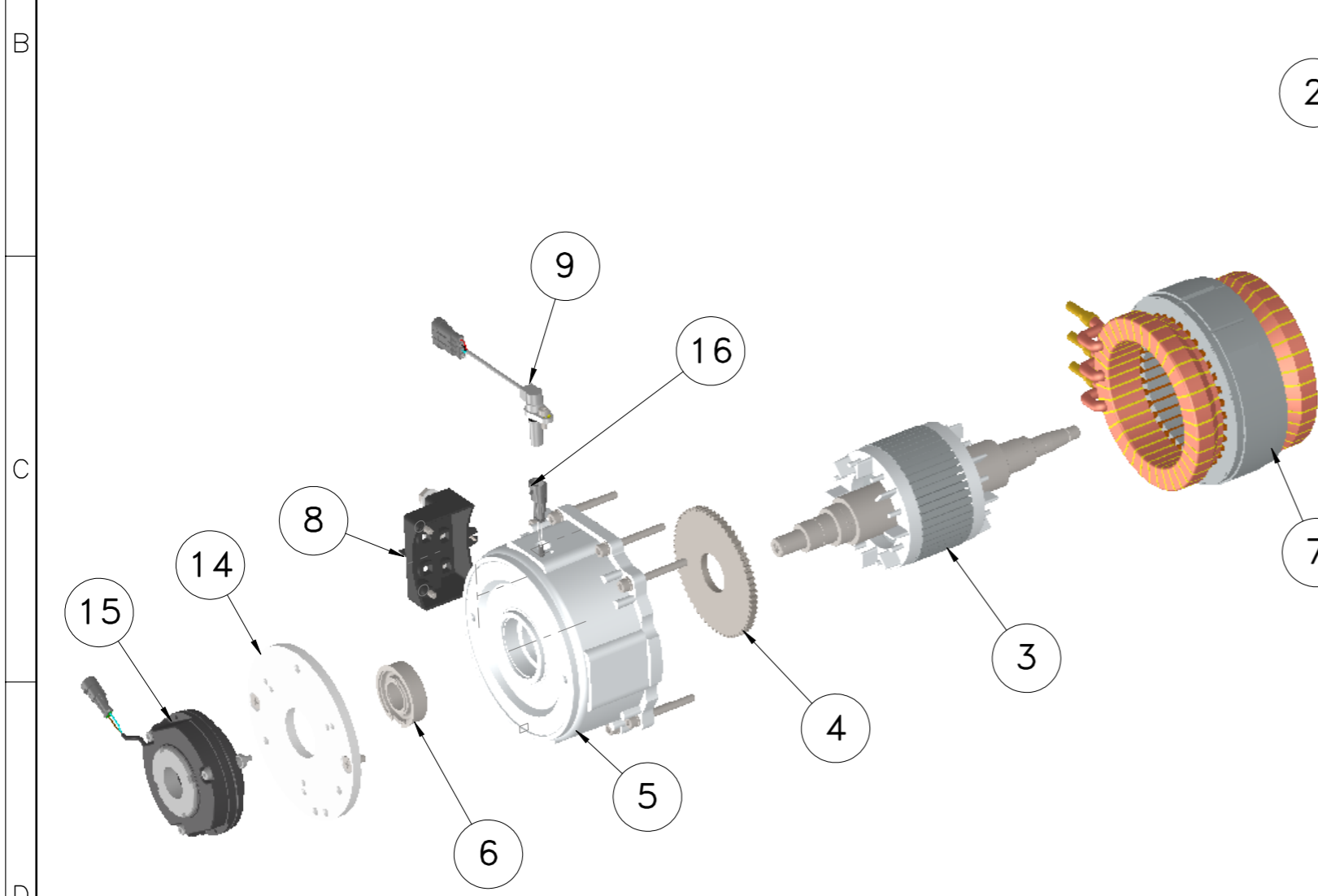
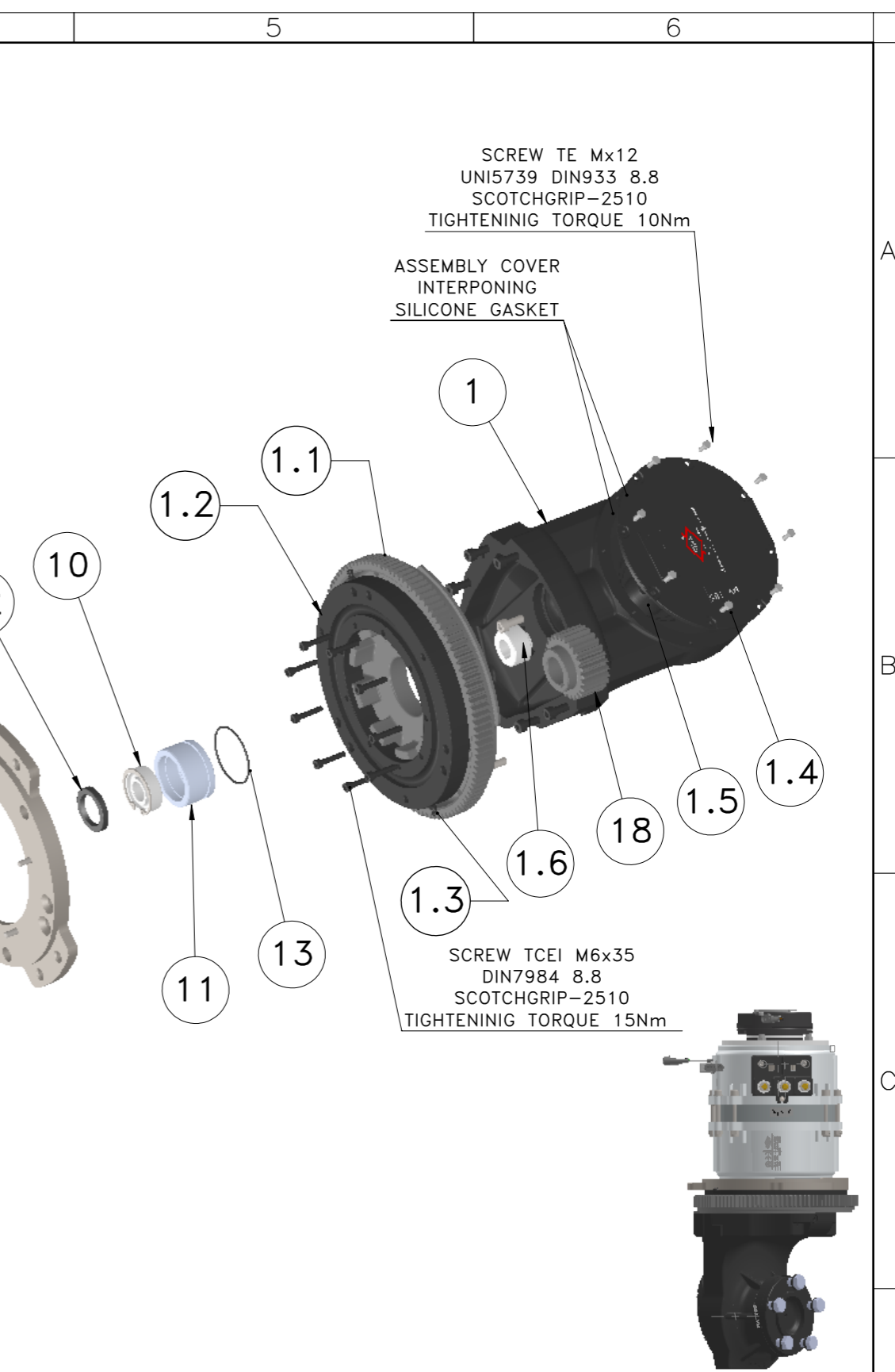


	1		
18	1	PINION z=26 m=2.5 ø28	13420
17	1	FLANGE	13753
16	2	CONNECTOR AMP 2	90739
15	1	BRAKE ø125CR	111108
14	1	BRAKE PLATE	13725
13	1	OR 3225	91563
12	1	SEALING	90121
11	1	COMPASS	14609
10	1	BEARING 6204 2Z	91108
9	1	SPEED SENSOR	70027
8	1	BASE	34339
7	1	STATOR FIELD	31027T
6	1	BEARING 6206 2Z	91133
5	1	FLANGE	31866
4	1	FONIC WHEEL	13350
3	1	ROTOR	31179
2	1	FLANGE	33578
1	1	MV188 COMPLETE	6293
POS.	Q.TY	DESCRIPTION	CODE

MV188 COMPLETE (11708)			
1.6	1	GEARS	12951
1.5	1	COUPLE GLEASON	12950
1.4	1	GEAR COVER	11415
1.3	2	GREASE NIPPLE DIN7663/A ES7 M6x1	11414
1.2	1	FLANGE ROTARY ENGINE	11423
1.1	1	GEARS Z=108	11422
POS.	Q,TY	DESCRIPTION	CODE



DIS. 10932-E		REV 00	DISEGNATO AN2 Studio	VISTO	APPROVAZIONE U.T.E.	Rev	Visto	
MODIFICHE		DATA 22/01/2024	SCALA 1:6	AGGIORNAMENTO STRUTTURA	Via Danimarca, 14/14 20093 Cologno Monzese - Milano - ITALY			
0 EMISSIONE		22.01.24	AN2	SPAREPARTS MV188 MOTOR CODE 307110T		24 Vdc / 3000 W		CODICE 10932-E
Project Nr.		2400003/101						

S:\ArchivioDirectory\Nuove\ArchivioSolidi\Works\DISIGN\3D\01_ASSIEM\06_MTRTE_VERTICAL\03_MV188\

Formato: A3 Disegno eseguito con SW non sono ammesse variazioni o modifiche manuali